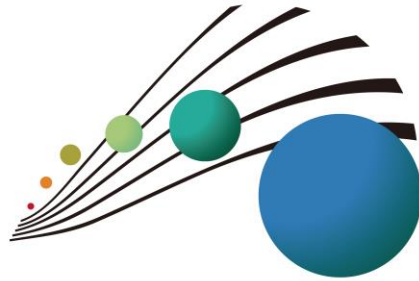


# Competition Regulations



## The 4th KAWAI MUSIC SCHOOL PIANO COMPETITION

# Message



The 4th  
KAWAI MUSIC SCHOOL  
PIANO COMPETITION

At KAWAI MUSIC SCHOOL, we have conducted our music education activities with three goals: (1) learning through music, not just learning music (2) not just aiming to acquire techniques, and (3) nurturing individuality and making a richer personality through activities to express oneself through music.

They are also based on our educational philosophy: "Through music, we guide the irreplaceable personality of each student, and through mutual respect for each person's personality, we create the joy of communicating and resonating with others".

Thanks to the understanding and cooperation of all of you, we are able to hold this competition for the fourth time, carrying on the spirit of the KAWAI MUSIC COMPETITION of "actively valuing spontaneous musical expression rather than superiority or inferiority of technique," which is based on the educational philosophy of the KAWAI MUSIC SCHOOL.

We would like you to demonstrate your willingness to express yourself, such as the joy of making music with the teacher or the delight of conveying yourself to a large audience.

We hope that this competition will help you to rediscover the importance and necessity of music and make your musical life more fruitful.

# Eligibility



The 4th  
KAWAI MUSIC SCHOOL  
PIANO COMPETITION

## **Preliminary Round**

Current KAWAI MUSIC SCHOOL students who live in Indonesia or Thailand or Taiwan or Vietnam

## **Final Round**

Applicants who won the Gold Prize in the preliminary round in each country or region.

Gold prize winners from each country or will receive a "Certificate of Eligibility for the Japan Finals" in or around November 2024.

< KAWAI MUSIC SCHOOL in each country / region >

- Indonesia : PT. KAWAI Music School Indonesia
- Thailand : PRIME MUSIC Co., Ltd
- Taiwan : Tong Ho Musical & Wooden Works Co., Ltd.
- Vietnam : Viet Thuong Trading and Service Manufacturing Corporation

# Contact information for each country/region



The 4th  
KAWAI MUSIC SCHOOL  
PIANO COMPETITION



## **Indonesia**

PT. KAWAI Music School Indonesia



## **Thailand**

PRIME MUSIC Co., Ltd



## **Taiwan**

Tong Ho Musical & Wooden Works Co., Ltd.



## **Vietnam**

Viet Thuong Trading and Service Manufacturing  
Corporation

# Competition Schedule



The 4th  
KAWAI MUSIC SCHOOL  
PIANO COMPETITION

This competition will be held as follows.

The selection process consists of three stages: preliminary round, first selection in the final round, and secondary selection in the final round.

June 2024 Announcement of Regulations

September to November 2024 Preliminary Round in each country / region

December 2024 Final Round Application Period **【Submit a video】**

January 2025 Final Round -1st Round **【Judging based on the video】**

February 2025 Final Round -2nd Round **【Judging based on the video】**

March 2025 Final Round Results Announcement

# Instruments



The 4th  
KAWAI MUSIC SCHOOL  
PIANO COMPETITION

Please perform on a grand piano or an upright piano.  
Make sure the piano is well-tuned before recording the performance video so that the student can perform in a good condition.  
※For piano tuning, please contact KAWAI MUSIC SCHOOL in your country or region.



Contestants whose feet do not touch the floor should use a footstool to stabilize their posture during the performance.



# How to apply



The 4th  
KAWAI MUSIC SCHOOL  
PIANO COMPETITION

## **Preliminary Round**

Please contact KAWAI MUSIC SCHOOL in your country or region.

## **Final Round**

Information will be sent to those who are qualified for the Final Round by Nov 30, 2024.

※Please make sure to submit your application by Dec 24, 2024.

※Once you have submitted your application, you will receive a confirmation email.

※You can review your application in the email, but please note that you cannot change the content of the application after it has been submitted.

※Even if you submit more than 1 application, the first one will only be accepted and valid.

# Application fee



The 4th  
KAWAI MUSIC SCHOOL  
PIANO COMPETITION

You must pay the application fee for both the Preliminary Round and the Final Round.

## **Preliminary Round**

Please contact KAWAI MUSIC SCHOOL in your country or region.

## **Final Round**

**JPY 5,000**

Information regarding payment methods will be provided at the time of application for the final round.

As a general rule, cancellations and refunds are not permitted after the application deadline has passed.



# Prizes



The 4th  
KAWAI MUSIC SCHOOL  
PIANO COMPETITION

## Preliminary Round

Gold Prize / Silver Prize / Bronze Prize / Other Prizes

(Gold Prize winners will be qualified for the Final Round.)

## Final Round

[For students] Grand Prize / Special Prize / Gold Prize / Silver Prize / Bronze Prize

[For teachers] Best Teacher Award (given to the teachers of the Grand Prize winners)

As an extra prize, the Grand Prize winners will receive a KAWAI mini piano with an original nameplate.

All participating performers and their teachers will receive certificate and commemorative gifts.



# Results announcement



The 4th  
KAWAI MUSIC SCHOOL  
PIANO COMPETITION

## **Preliminary Round**

Please contact KAWAI MUSIC SCHOOL in your country or region.

## **Final Round**

We will announce the results on our official website.

(<https://musicschool.kawai-global.com/>)



# The videos of past competition winners.



The 4th  
KAWAI MUSIC SCHOOL  
PIANO COMPETITION



KAWAI MUSIC SCHOOL PIANO COMPETITION

-ONLINE-



2023 KAWAI MUSIC SCHOOL PIANO COMPETITION



The 3<sup>rd</sup> KAWAI MUSIC SCHOOL PIANO COMPETITION

# Category



The 4th  
KAWAI MUSIC SCHOOL  
PIANO COMPETITION

Categories are divided based on the age of the participants and the textbook they are using.

Each participant can join only one category.

Exceptionally, you can participate in two categories only if you apply for 1 from Solo and 1 from Duo category.

Students who won the “Best Performance Award” or “Grand Prize” in the previous competitions will not be accepted to the same category.  
(Application to the higher level category will be accepted.)

Students who have not turned 4 years old as of December 1, 2024 are not eligible to participate.

(3-year-olds are not permitted to participate)

# Category



The 4th  
KAWAI MUSIC SCHOOL  
PIANO COMPETITION

## **Category A : SOLO** SOUND TREE 6, ALUBM

Date of Birth On or after April 1, 2006  
18 or younger

## **Category B : SOLO** SOUND TREE 4B, 5A, 5B

Date of Birth On or after April 1, 2006  
18 or younger

## **Category C : SOLO** SOUND TREE 3B, 4A

Date of Birth On or after April 1, 2009  
15 or younger

## **Category D : SOLO** SOUND TREE 2, 3A

Date of Birth On or after April 1, 2014  
10 or younger

## **Category E : SOLO** SOUND TREE J

Date of Birth On or after April 1, 2011  
13 or younger

## **Category F : SOLO** SOUND TREE 1A, 1B

Date of Birth On or after April 1, 2016  
8 or younger

## **Category G : DUO** SOUND TREE 2, 3A

Date of Birth On or after April 1, 2014  
10 or younger

## **Category H : DUO** SOUND TREE J

Date of Birth On or after April 1, 2011  
13 or younger

## **Category I : DUO** SOUND TREE 1A, 1B

Date of Birth On or after April 1, 2016  
8 or younger

# Assigned Pieces List Category A



The 4th  
KAWAI MUSIC SCHOOL  
PIANO COMPETITION

SOUND TREE 6

4. Invention No.1 / Johann Sebastian Bach

SOUND TREE 6

5. Sarabande / Georg Fredrich Händel **\*Omit repeats**

SOUND TREE 6

13. Fugue / Georg Philipp Telemann

SOUND TREE 6

14. Sonata / Domenico Scarlatti **\*Omit repeats**

SOUND TREE  
ALBUM

5. A Prelude / John Blow

SOUND TREE  
ALBUM

6. Rondeau / Jean-François Dandrieu

SOUND TREE  
ALBUM

21. Chaconne / Johann Kaspar Ferdinand

SOUND TREE  
ALBUM

30. Le Coucou / Louis-Claude Daquin

**Omit the repeats of [No.5 Sarabande / Georg Fredrich Händel] and [No.14 Sonata / Domenico Scarlatti] in the SOUND TREE 6 text.**

**Please follow the instructions on the sheet music for repeats of the other pieces.**

If there is conflict in interpretation between the English version and other language version of this Regulations due to the translation reasons, the state in the English version will be considered to be the standard.

# Assigned Pieces List Category B



The 4th  
KAWAI MUSIC SCHOOL  
PIANO COMPETITION

SOUND TREE 4B	33. The Fifers / Jean-François Dandrieu
---------------	---

SOUND TREE 4B	35. Menuet en Rondeau / Jean-Philippe Rameau
---------------	--

SOUND TREE 5A	6. Minuet / Johann Krieger
---------------	----------------------------

SOUND TREE 5A	7. Minuet / Christian Petzold
---------------	-------------------------------

SOUND TREE 5A	8. Little Prelude / Johann Sebastian Bach
---------------	---

SOUND TREE 5B	3. Minuet / Alessandro Scarlatti
---------------	----------------------------------

SOUND TREE 5B	4. Gigue / Johann Phillip Kirnberger
---------------	--------------------------------------

**Please follow the instructions on the sheet music regarding repeats of the assigned piece.**

If there is conflict in interpretation between the English version and other language version of this Regulations due to the translation reasons, the state in the English version will be considered to be the standard.

# Assigned Pieces List Category C



The 4th  
KAWAI MUSIC SCHOOL  
PIANO COMPETITION

SOUND TREE 3B	3. Memories / F. Beyer
SOUND TREE 3B	8. Little Foxes / German Folk Song
SOUND TREE 3B	12. Dialogue / B. Bartók
SOUND TREE 3B	17. Gentle Heart / KAWAI
SOUND TREE 3B	22. Oh! My Tender Musette / French Folk Music
SOUND TREE 3B	26. Old King Cole / Mother Goose Song
SOUND TREE 3B	28. In the Sunlight through Trees / KAWAI
SOUND TREE 3B	30. Minuet / L. Mozart
SOUND TREE 3B	34. Three Little Kittens / Mother Goose
SOUND TREE 3B	35. The Mermaid Song / C. M. v. Weber
SOUND TREE 4A	1. Augustine / Austrian Folk Song
SOUND TREE 4A	7. Ding Dong Bell / Mother Goose Song
SOUND TREE 4A	10. An Old French Air / Composer : Anonymous
SOUND TREE 4A	14. Bourrée / Christoph Graupner
SOUND TREE 4A	17. Minuet K.2 / Wolfgang Amadeus Mozart
SOUND TREE 4A	18. Sonatina / William Duncombe
SOUND TREE 4A	23. The Lark / Michael Glinka
SOUND TREE 4A	26. Greensleeves / English Folk Song
SOUND TREE 4A	28. Sounds Like Something Good / Heinrich Wohlfahrt

**Please follow the instructions on the sheet music regarding repeats of the assigned piece.**

If there is conflict in interpretation between the English version and other language version of this Regulations due to the translation reasons, the state in the English version will be considered to be the standard.



# Assigned Pieces List Category D



The 4th  
KAWAI MUSIC SCHOOL  
PIANO COMPETITION

SOUND TREE 2	10. Row Your Boat / American Folk Song
SOUND TREE 2	12. Skip to My Lou / American Folk Song
SOUND TREE 2	18. Happy Birthday to You / M. J. Hill & P. S. Hill
SOUND TREE 2	21. Lamb Seller / Mother Goose Song
SOUND TREE 2	23. Pig in the Poke / American Folk Song
SOUND TREE 2	27. Stars Twinkle / German Folk Song
SOUND TREE 2	28. Silent the Night / Traditional
SOUND TREE 3A	8. Volksweise (Folk Tune) / German Folk Song
SOUND TREE 3A	13. The Little Cowherd / Swedish Folk Song
SOUND TREE 3A	19. Fallen Leaves / German Folk Song
SOUND TREE 3A	21. Air Populaire / French Folk Song
SOUND TREE 3A	24. Green Pasture / German Folk Song
SOUND TREE 3A	31. Work for Joy! / D. G. Turk
SOUND TREE 3A	35. Little Papa / French Folk Song

**Please follow the instructions on the sheet music regarding repeats of the assigned piece.**

If there is conflict in interpretation between the English version and other language version of this Regulations due to the translation reasons, the state in the English version will be considered to be the standard.

# Assigned Pieces List Category E



The 4th  
KAWAI MUSIC SCHOOL  
PIANO COMPETITION

SOUND TREE J	24. Everybody's March / Jean-Jacques Rousseau
SOUND TREE J	25. Mary Had a Little Lamb / American Folk Song
SOUND TREE J	28. Mallards Moving / Mayuki Motohashi
SOUND TREE J	30. On the Bridge / French Folk Song
SOUND TREE J	36. Girls and Boys Come Out to Play / Mother Goose Song
SOUND TREE J	37. Row Your Boat / American Folk Song
SOUND TREE J	38. Skip to My Lou / American Folk Song
SOUND TREE J	42. Happy Birthday to You / M. J. Hill
SOUND TREE J	44. Lamb Seller / Mother Goose Song
SOUND TREE J	46. Pig in the Poke / American Folk Song
SOUND TREE J	48. Polka in the Woods / Polish Folk Song
SOUND TREE J	49. Stars Twinkle / German Folk Song
SOUND TREE J	50. Silent the Night / Traditional
SOUND TREE J	51. Barcarolle from "Tales of Hoffmann" / J. Offenbach
SOUND TREE J	53. When the Saints Go Marching In / American Folk Song

**Please follow the instructions on the sheet music regarding repeats of the assigned piece.**

If there is conflict in interpretation between the English version and other language version of this Regulations due to the translation reasons, the state in the English version will be considered to be the standard.

# Assigned Pieces List Category F



The 4th  
KAWAI MUSIC SCHOOL  
PIANO COMPETITION

SOUND TREE 1A	23. Ferris Wheel / KAWAI
SOUND TREE 1A	25. Teacup / KAWAI
SOUND TREE 1A	26. Merry-Go-Round / KAWAI
SOUND TREE 1A	34. Hot Cross Buns / Mother Goose <b>*Notes in the ( ) in bar 9 to 12 must be played.</b>
SOUND TREE 1A	37. Buzz, Buzz, Buzz / Bohemian Folk Song
SOUND TREE 1B	17. Twinkle Twinkle Little Star / French Folk Song
SOUND TREE 1B	18. Sowing the Seeds of Spring (Spring Song) / Russian Folk Song
SOUND TREE 1B	19. The Candy House / KAWAI
SOUND TREE 1B	20. Butterfly / German Folk Song
SOUND TREE 1B	21. Everybody's March / Jean-Jacques Rousseau
SOUND TREE 1B	24. Dance / KAWAI
SOUND TREE 1B	25. Cuckoo / German Folk Song
SOUND TREE 1B	27. Mallards Moving / Mayuki Motohashi
SOUND TREE 1B	30. On the Bridge / French Folk Song

**Please follow the instructions on the sheet music regarding repeats of the assigned piece.**

If there is conflict in interpretation between the English version and other language version of this Regulations due to the translation reasons, the state in the English version will be considered to be the standard.

# Assigned Pieces List Category G



The 4th  
KAWAI MUSIC SCHOOL  
PIANO COMPETITION

SOUND TREE 2	4. Bourrée / French Folk Song
SOUND TREE 2	7. Girls and Boys Come Out to Play / Mother Goose Song
SOUND TREE 2	13. Little Polly Flinders / Mother Goose Song
SOUND TREE 2	16. Pease Porridge Hot / Mother Goose Song
SOUND TREE 2	25. Polka in the Woods / Polish Folk Song
SOUND TREE 2	26. Merry Thoughts / Hildegard Behrens
SOUND TREE 2	27. Stars Twinkle / German Folk Song
SOUND TREE 2	28. Silent the Night / Traditional
SOUND TREE 2	29. Barcarolle from "Tales of Hoffmann" / Jacques Offenbach
SOUND TREE 3A	1. Can You Hear a Sound? / Misako Hazemoto <b>*Make sure to use music sheet on page 5.</b>
SOUND TREE 3A	6. London Bridge is Falling Down / Mother Goose Song
SOUND TREE 3A	16. Little Miss Moon / KAWAI
SOUND TREE 3A	26. Little Piece / A. Bruckner <b>*The teacher must perform Part II</b>
SOUND TREE 3A	34. If I were a Little Bird / German Folk Song
SOUND TREE 3A	36. Lullaby of the Moon / French Folk Song

**Please follow the instructions on the sheet music regarding repeats of the assigned piece.**

If there is conflict in interpretation between the English version and other language version of this Regulations due to the translation reasons, the state in the English version will be considered to be the standard.

# Assigned Pieces List Category H



The 4th  
KAWAI MUSIC SCHOOL  
PIANO COMPETITION

SOUND TREE J	22. Turkey in the Straw / American Folk Song
SOUND TREE J	23. The Candy House / KAWAI
SOUND TREE J	26. Cuckoo / German Folk Song
SOUND TREE J	28. Mallards Moving / Mayuki Motohashi
SOUND TREE J	30. On the Bridge / French Folk Song
SOUND TREE J	33. Bourrée / French Folk Song
SOUND TREE J	39. Little Polly Flinders / Mother Goose Song
SOUND TREE J	41. Pease Porridge Hot / Mother Goose Song
SOUND TREE J	44. Lamb Seller / Mother Goose Song
SOUND TREE J	46. Pig in the Poke / American Folk Song
SOUND TREE J	48. Polka in the Woods / Polish Folk Song
SOUND TREE J	49. Stars Twinkle / German Folk Song
SOUND TREE J	50. Silent the Night / Traditional
SOUND TREE J	51. Barcarolle from "Tales of Hoffmann" / J. Offenbach
SOUND TREE J	54. Merry Thought / H. Berens

**Please follow the instructions on the sheet music regarding repeats of the assigned piece.**

If there is conflict in interpretation between the English version and other language version of this Regulations due to the translation reasons, the state in the English version will be considered to be the standard.

# Assigned Pieces List Category I



The 4th  
KAWAI MUSIC SCHOOL  
PIANO COMPETITION

SOUND TREE 1A	23. Ferris Wheel / KAWAI
SOUND TREE 1A	25. Teacup / KAWAI <b>*The teacher must perform the left hand accompaniment.</b>
SOUND TREE 1A	26. Merry-Go-Round / KAWAI <b>*The teacher must perform the left hand accompaniment.</b>
SOUND TREE 1A	29. Mary Had a Little Lamb / American Folk Song
SOUND TREE 1A	33. Whap! Bap! Rice Cake! / Misako Hazemoto
SOUND TREE 1A	37. Buzz, Buzz, Buzz / Bohemian Folk Song
SOUND TREE 1B	13. Sol-Sol-Sol, Mi-Mi-Mi / KAWAI
SOUND TREE 1B	18. Sowing the Seeds of Spring (Spring Song) / Russian Folk Song
SOUND TREE 1B	19. The Candy House / KAWAI
SOUND TREE 1B	24. Dance / KAWAI
SOUND TREE 1B	25. Cuckoo / German Folk Song
SOUND TREE 1B	27. Mallards Moving / Mayuki Motohashi
SOUND TREE 1B	30. On the Bridge / French Folk Song

**Please follow the instructions on the sheet music regarding repeats of the assigned piece.**

If there is conflict in interpretation between the English version and other language version of this Regulations due to the translation reasons, the state in the English version will be considered to be the standard.

# Category G, H, I (Duo)

## Performance position of teacher and student



The 4th  
KAWAI MUSIC SCHOOL  
PIANO COMPETITION

The student sits facing the middle of the keyboard. (near middle C)  
For both student and teacher parts, it is not permitted to change the range specified in the sheet music.  
Please select your performance position from the following three patterns depending on the selected pieces.

### Example of performance position



(1) The teacher sits on the left side of the student (bass side)



(2) The teacher sits on the right side of the student (treble clef side)



(3) The teacher stands behind the student

# How to select pieces in Category A and B



The 4th  
KAWAI MUSIC SCHOOL  
PIANO COMPETITION

## 【Common to the Preliminary Round and the Final Round】

Perform one piece from Assigned Pieces and one Free Piece by ear.

※Please perform the Assigned Piece first and then the Free Piece.

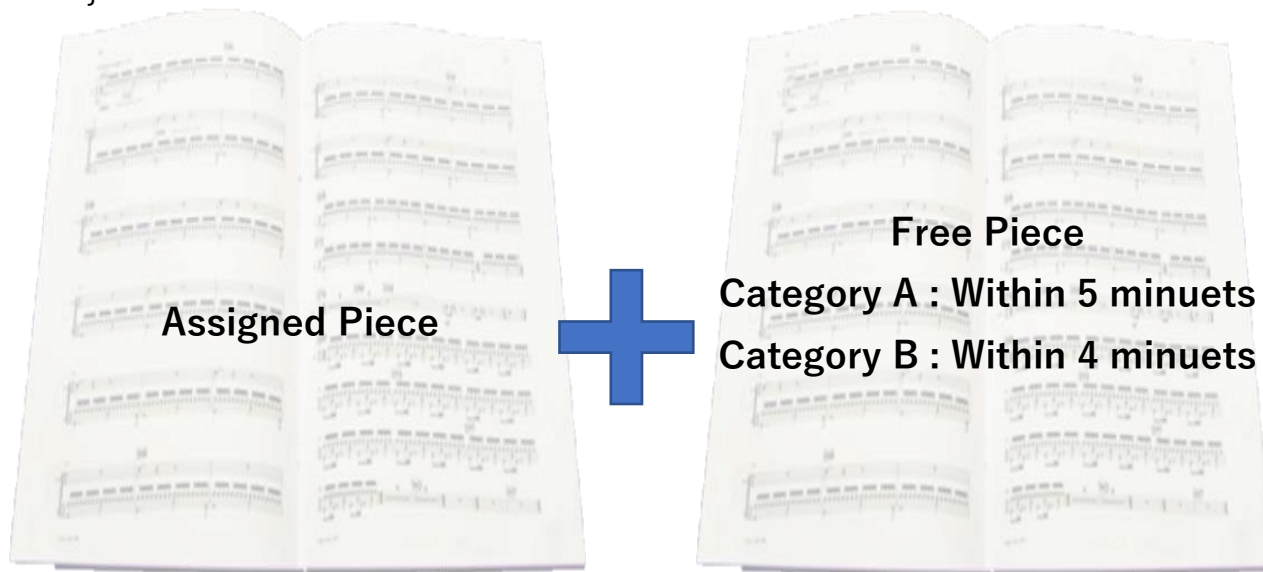
※Assigned Piece must be selected from the “Assigned Pieces List”.

※When you participate in the Final Round, you may change the pieces from those you performed in the Preliminary Round.

※Regarding the repeat in assigned pieces, please follow the instructions as indicated in the list of assigned pieces.

※You can omit the repeat marks in the free piece. However, D.C. and D.S. must be performed.

※If you exceed the designated performance time for the Free Piece, it will be subject to a score deduction.



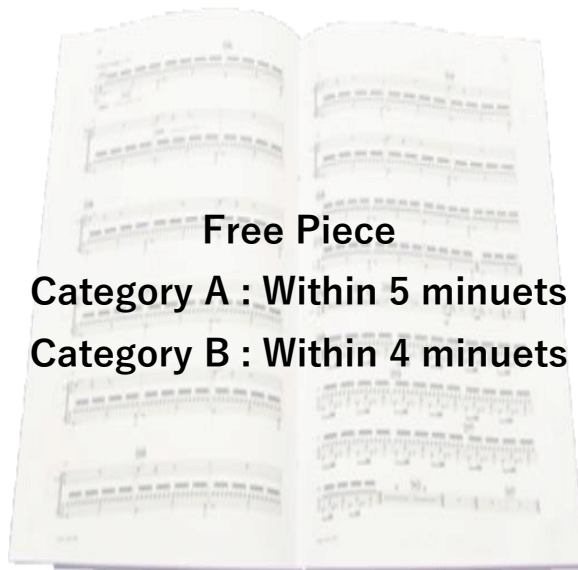


# Notes for selecting a free choice piece



The 4th  
KAWAI MUSIC SCHOOL  
PIANO COMPETITION

- ① It must be a classical piece.
- ② The piece must have a published music sheet.
- ③ Original compositions by participant will not be accepted.
- ④ You may perform multiple pieces from a single suite or variation, as long as they are within the designated performance time.
- ⑤ Be sure to select piece that are copyright-free (70 years after the author's death).



## **Free Piece**

**Category A : Within 5 minuets**

**Category B : Within 4 minuets**

# How to select pieces in Category C, D, E and F



The 4th  
KAWAI MUSIC SCHOOL  
PIANO COMPETITION

## 【Common to the Preliminary Round and the Final Round】

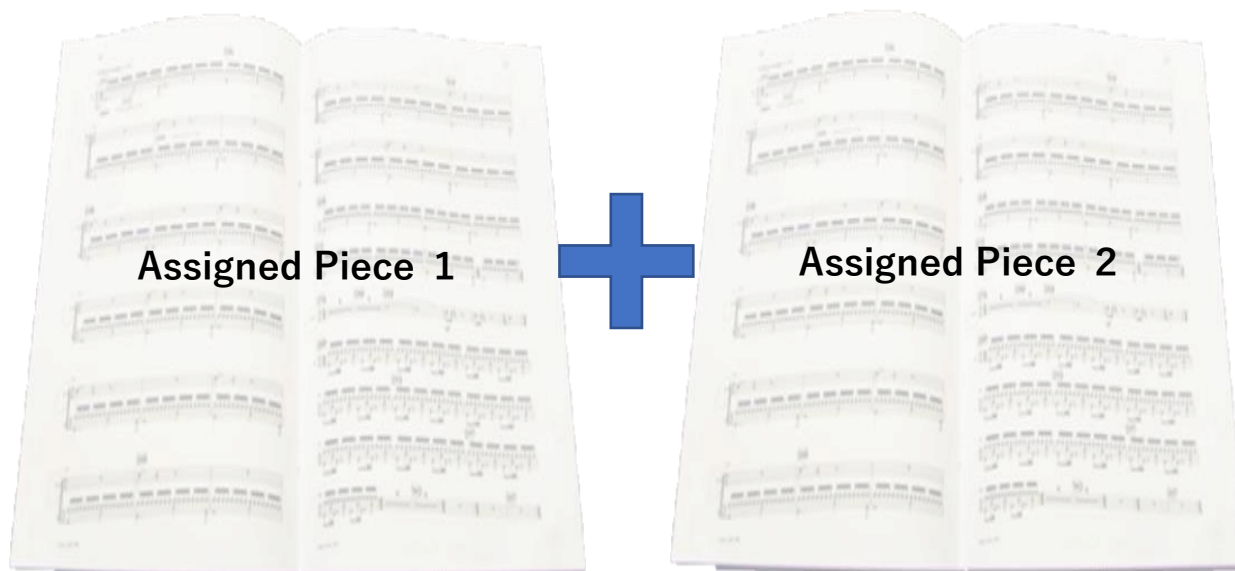
Perform two Assigned Pieces by ear.

Assigned Piece must be selected from the “Assigned Pieces List” .

Please follow the instructions on the sheet music regarding repeats of the assigned piece.

D.S. and D.C. must be played.

When you participate in the Final Round, you may change the pieces from those you performed in the Preliminary Round.



# How to select pieces in Category G, H and I



The 4th  
KAWAI MUSIC SCHOOL  
PIANO COMPETITION

## 【Common to the Preliminary Round and the Final Round】

Perform two Assigned Pieces by ear or from the music sheet.

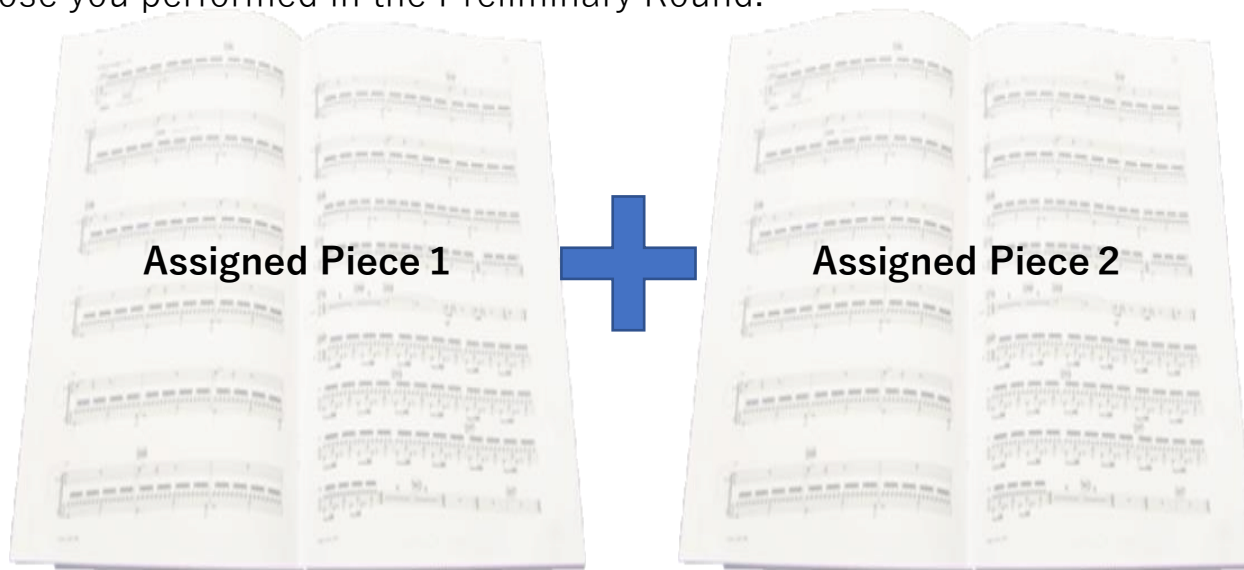
Student Part must be performed by the student and Teacher Part must be performed by the teacher. (Do not higher or lower the performance position. Make sure to play in the same position as music sheet.)

Assigned Piece must be selected from the “Assigned Pieces List” .

Please follow the instructions on the sheet music regarding repeats of the assigned piece.

D.S. and D.C. must be played.

When you participate in the Final Round, you may change the pieces from those you performed in the Preliminary Round.



# Textbooks for selecting assigned pieces



The 4th  
KAWAI MUSIC SCHOOL  
PIANO COMPETITION

Be sure to use the sheet music in the SOUND TREE textbook.



# Jury members



The 4th  
KAWAI MUSIC SCHOOL  
PIANO COMPETITION

## **Preliminary Round**

Members appointed by KAWAI JAPAN

## **Final Round**

First round and second round judging will be conducted by Japanese jury members from the Kawai Music School Japan Headquarters.

# Judging Philosophy



The 4th  
KAWAI MUSIC SCHOOL  
PIANO COMPETITION

The judging process in this competition will focus on musical expression, not just technique.

Therefore, your choice of piece itself will not affect your evaluation.

In particular, we will evaluate the following.

## 1. Whether the performance shows your willingness to express yourself.

- Whether you are putting your emotions into the sound and trying to convey them to the audience.
- Whether you try to do your best.
- Whether you have a positive and enthusiastic attitude.

## 2. Whether the performance shows the results of your efforts.

- Whether you try to create beautiful sound.
- Whether you understand the characteristics and elements of the piece (beat, rhythm, dynamics, phrasing, chord movement, balance of notes in each part, use of pedals, etc.) and express them in your performance.
- Whether you understand and perform the differences in the characteristics of music depending on the era in which the music was composed, the type of music, and the composer.

# Judging Philosophy



The 4th  
KAWAI MUSIC SCHOOL  
PIANO COMPETITION

<To instructors>

It is often said that the students' own individual expression is unlikely to occur in the beginning of the piano lesson because the directions by the instructor have a great influence on the students' performance.

However, we believe that the students' own individual expression comes out to some extent in their performance as the study progresses, or the students actively express their individuality from the beginning of the study.

Therefore, the performance in this competition will be evaluated as the result of the collaboration between the instructor and the student, in which the individuality of each student is expressed to the fullest.

# Rules of performance and recording



The 4th  
KAWAI MUSIC SCHOOL  
PIANO COMPETITION

## 【Handling of submitted videos】

All rights (copyrights, portrait rights, etc.) to the video data received will belong to the organizer, Kawai Musical Instruments Manufacturing Co., Ltd.

The video may be used on our website or in other advertisements.



## 【Period of video recording】

Only performance video recorded from June 1, 2024 to December 24, 2024 is acceptable for the Final Round.

## 【Video editing and processing】

No editing or processing is allowed.

Make sure to record the entire performance at once, in a single video.

Please note that the audio may not be recorded immediately before and after the performance.

Please refrain from zooming in and out during recording.



# Rules of performance and recording

## -Location of recording-



The 4th  
KAWAI MUSIC SCHOOL  
PIANO COMPETITION

As much as possible, please record at your classroom.

If you have a grand piano or an upright piano, you can take the video at home.

In either case, the piano should be tuned in advance and in good condition.

※For piano tuning, please contact KAWAI MUSIC SCHOOL in your country or region.

Please be careful not to record any unnecessary sounds and noises.(e.g., talking, car or motorcycle noise, etc.).

# Rules of performance and recording

## -Camera installation-



The 4th  
KAWAI MUSIC SCHOOL  
PIANO COMPETITION



Please use a smartphone, tablet, or video camera to record your performance.

Please record in the highest quality possible.

Please be sure to use a stand.

Free to choose between portrait and landscape filming angles, but landscape orientation is recommended.

# Rules of performance and recording

## -Camera installation-

For the camera angle, be sure record from slightly above so that the hands are visible.



Basically, set up the camera from the treble side (right side from the performer's point of view), so that the entire body of the performer is recordable.

# Rules of performance and recording

## -Camera installation-



The 4th  
KAWAI MUSIC SCHOOL  
PIANO COMPETITION



# Rules of performance and recording

## -Camera installation-



The 4th  
KAWAI MUSIC SCHOOL  
PIANO COMPETITION

OK



NG

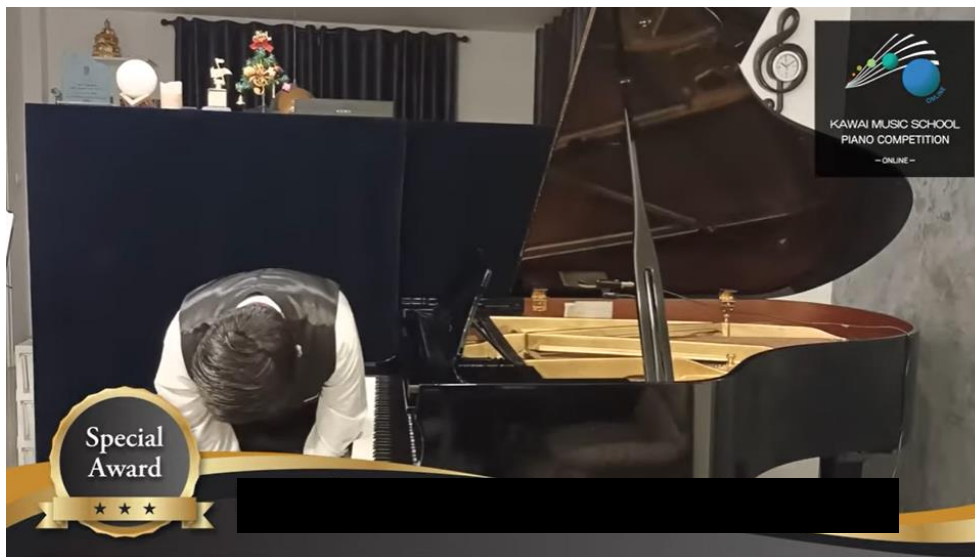


After recording, please be sure the video is not mirrored horizontally.

# Recording flow



The 4th  
KAWAI MUSIC SCHOOL  
PIANO COMPETITION



Please follow the procedure below when recording the performance.

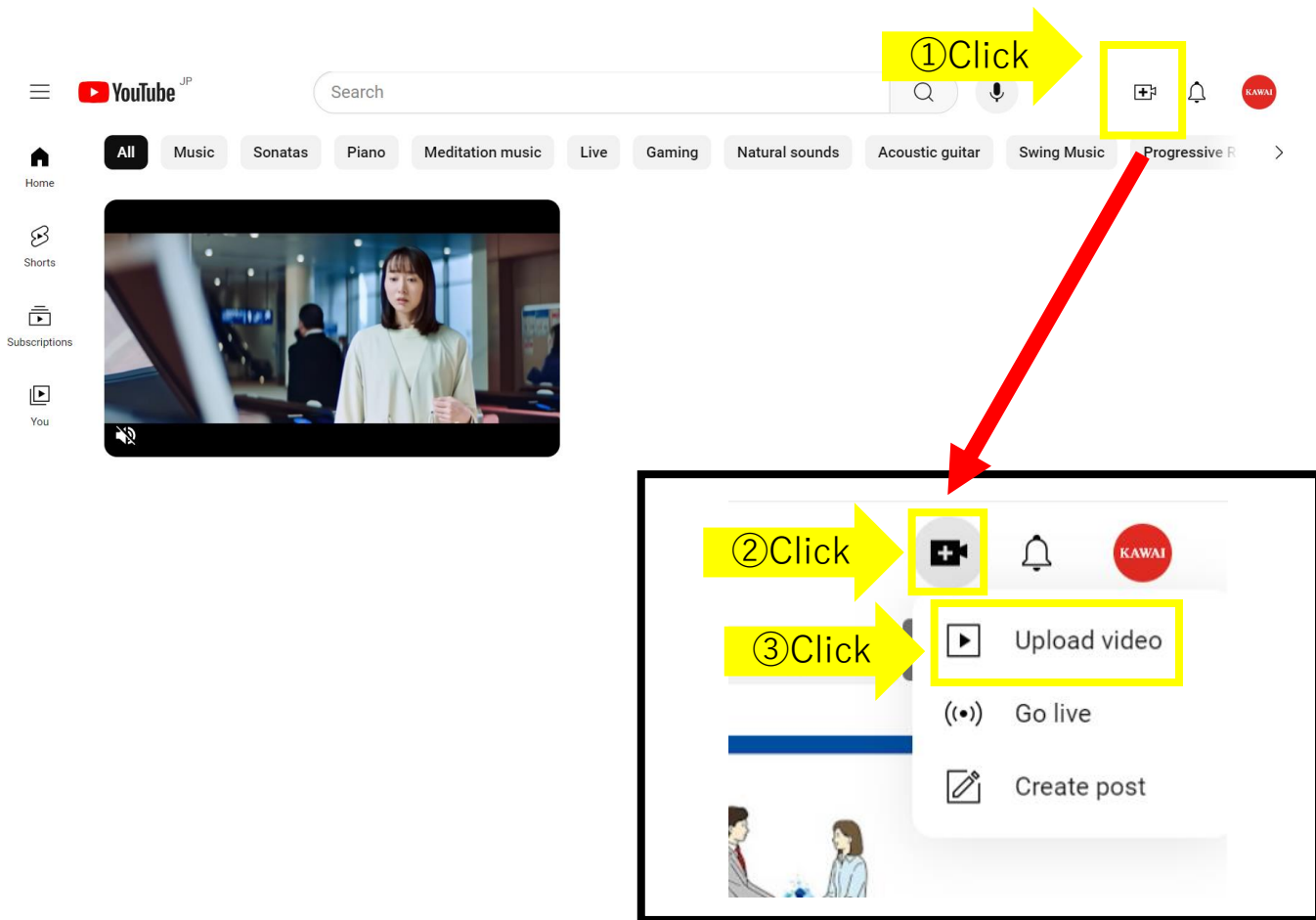
- ① Turn on the video
- ② Bow to the video recording device
- ③ Perform “Assigned Piece 1”
- ④ Perform “Free Piece” or “Assigned Piece 2”
- ⑤ Bow to the video recording device
- ⑥ Turn off the video

# How to upload YOU TUBE (1) For PC



The 4th  
KAWAI MUSIC SCHOOL  
PIANO COMPETITION

Click the icon in the upper right corner of the HOME page of YOU TUBE.

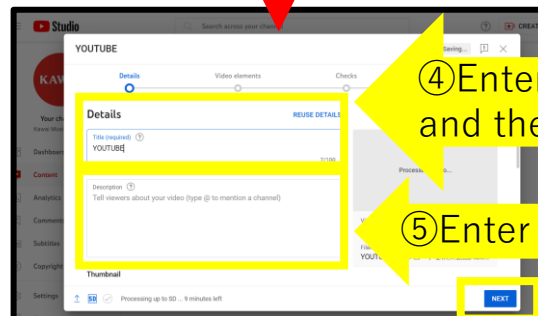
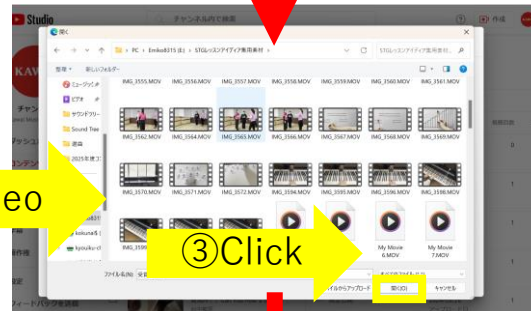
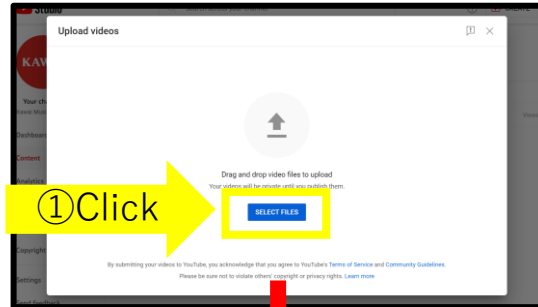




# How to upload YOUTUBE (2) For PC



The 4th  
KAWAI MUSIC SCHOOL  
PIANO COMPETITION





# How to upload YOUTUBE (3) For PC

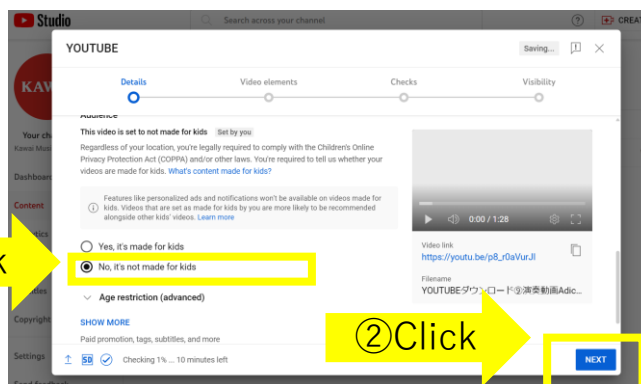


The 4th  
KAWAI MUSIC SCHOOL  
PIANO COMPETITION

In order to view each other's performances, please make the following settings when updating.

No, it's not made for kids

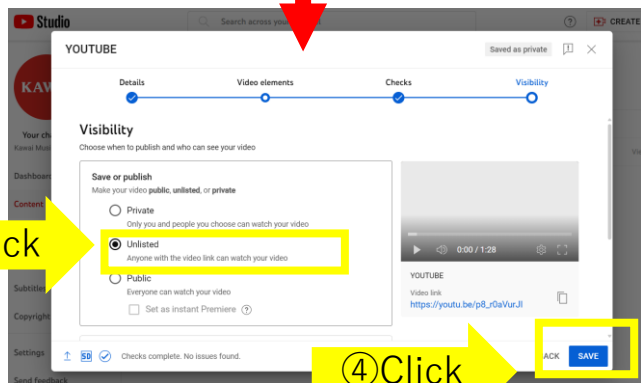
①Click



②Click

Unlisted

③Click

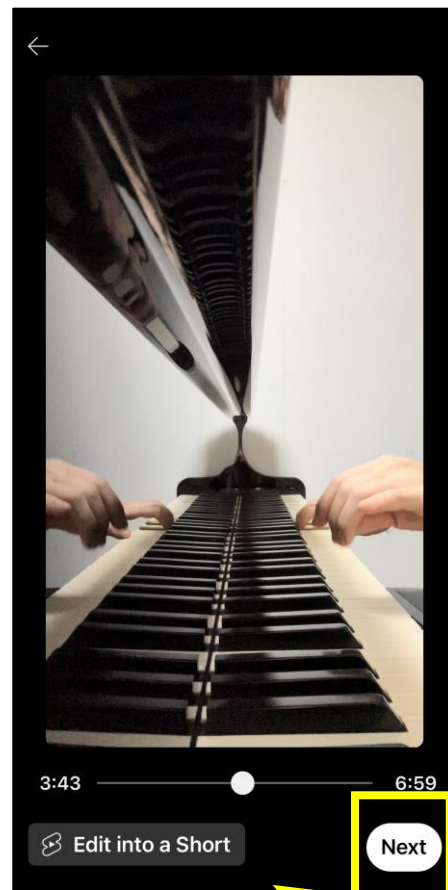
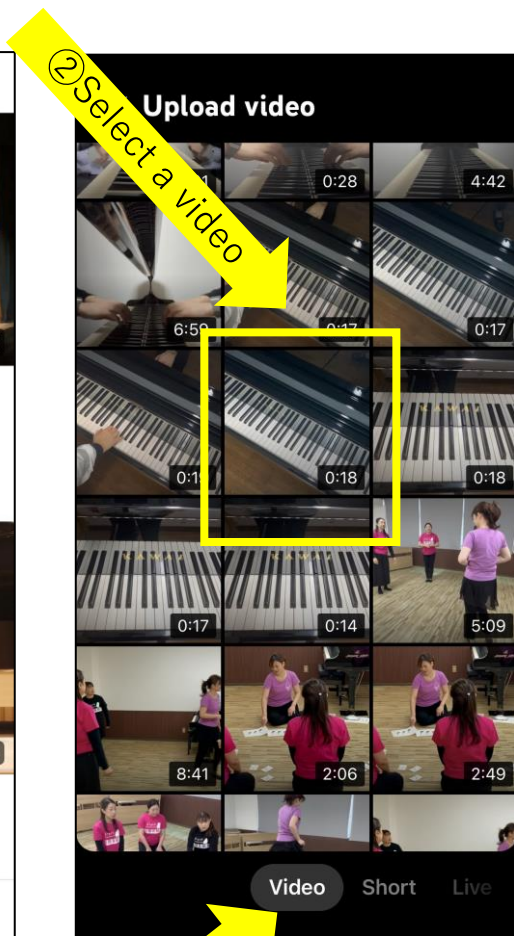


④Click

# How to upload YOUTUBE (1) For smartphones



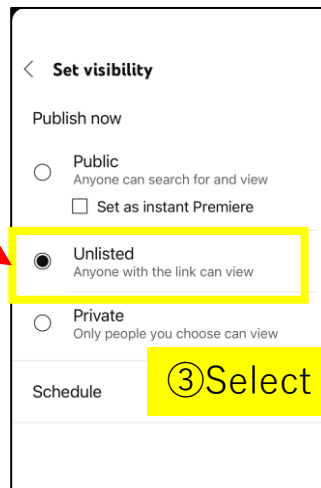
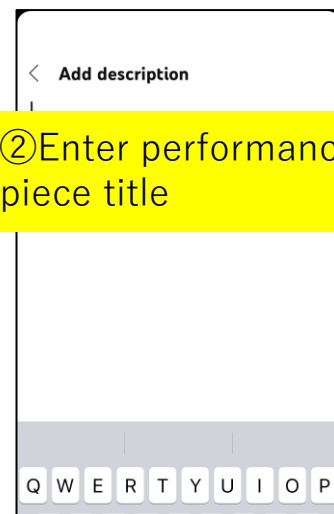
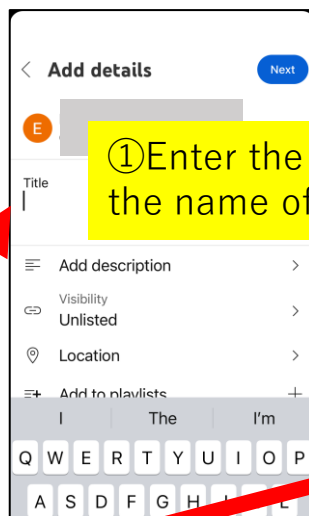
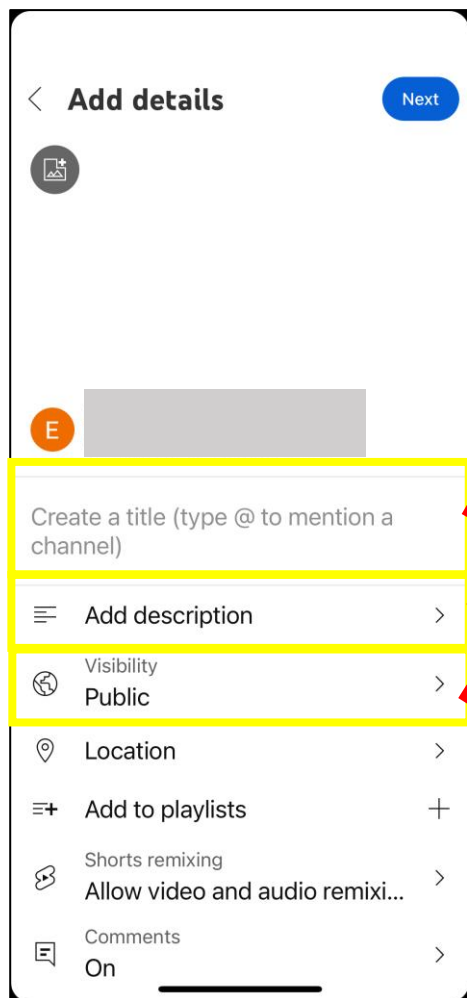
The 4th  
KAWAI MUSIC SCHOOL  
PIANO COMPETITION



# How to upload YOUTUBE (2) For smartphones



The 4th  
KAWAI MUSIC SCHOOL  
PIANO COMPETITION



③ Select "Unlisted"

# How to upload YOU TUBE (3) For smartphones



The 4th  
KAWAI MUSIC SCHOOL  
PIANO COMPETITION

The screenshot shows the 'Select audience' screen in the YouTube mobile app. A yellow arrow labeled '①Click' points to the 'No, it's not made for kids' option. A red arrow points down from this option to another yellow arrow labeled '②Click', which points to the 'Upload video' button at the bottom of the screen.

< **Select audience**

Is this video made for kids?

Regardless of your location, you're legally required to comply with the Children's Online Privacy Protection Act (COPPA) and/or other laws. You're required to tell us whether your videos are made for kids. [What's content made for kids?](#)

☐ Yes, it's made for kids ⓘ

☒ No, it's not made for kids

Age restriction (advanced) ▼

**Upload video**

# FAQ

## <About application>



The 4th  
KAWAI MUSIC SCHOOL  
PIANO COMPETITION

### **Q. Is this competition open to everyone?**

A. NO. Only current KAWAI MUSIC SCHOOL students who live in China or Indonesia or Thailand or Taiwan or Vietnam are eligible to apply.

### **Q. Do I have to go to Japan when I join the Final Round?**

A. NO. The Final Round is the video judging, so you won't be required to come to Japan.

### **Q. Can I join 2 categories at the same time?**

A. YES, only if you apply for 1 Solo category and 1 Duo category.

Please note that joining 2 solo categories or 2 duo categories is unacceptable.

# FAQ

## <About application>



The 4th  
KAWAI MUSIC SCHOOL  
PIANO COMPETITION

**Q. When participating in the Final Round, can I choose different category than the one I compete in the Preliminary Round?**

A. NO. You are not allowed to change the category when advancing to the Final Round.

**Q. I noticed an error in the application form after I submitted it. Is it possible to cancel the first application and submit a new one?**

A. For the Preliminary Round, please contact the KAWAI MUSIC SCHOOL in your country.

For the Final Round, you can't change the content of your application after you submit it.

# FAQ

## <About application>



The 4th  
KAWAI MUSIC SCHOOL  
PIANO COMPETITION

**Q. Is it possible to cancel the application and get a refund of the registration fee?**

A. NO. You may not cancel or receive a refund after you have submitted your application.

**Q. I have more than 1 teacher. What should I write in the "Name of Teacher" section of the application form?**

A. Please write one of your teacher's name.

**Q. Can I perform different pieces in the Preliminary Round and the Final Round?**

A. YES. Please be sure to comply with the rules of repertoire.

# FAQ

## <About application>



The 4th  
KAWAI MUSIC SCHOOL  
PIANO COMPETITION

**Q. I accidentally performed different piece from my application. Can I correct the application after the performance?**

A. For the Preliminary Round, please contact the KAWAI MUSIC SCHOOL in your country.

For the Final Round, you can't change the content of your application after you submit it.



# FAQ

## <About performance>



The 4th  
KAWAI MUSIC SCHOOL  
PIANO COMPETITION

**Q. After submitting the performance video for the final round, I noticed that I performed at 1 octave higher/lower position. Will this affect my evaluation?**

A. YES. We regard it as you playing wrong notes. Please be careful not to play notes that are not shown on the music sheet.

**Q. I accidentally ignored the repeat marks which are specified to be performed in the regulations. Will this affect my evaluation?**

A. YES. If you ignore the repeat that should be played, your score will be deducted.

# FAQ

## <About performance>



The 4th  
KAWAI MUSIC SCHOOL  
PIANO COMPETITION

**Q. When performing a free piece, I exceeded the designated performance time. Will this affect my evaluation?**

A. YES. If you exceed the designated time limit, your score will be deducted.

**Q. Can I edit the music sheet for the free piece so that the performance time will be within the limit?**

A. NO. You are not allowed to edit the piece. Omitting repeat is acceptable.

# FAQ

## <About performance>



The 4th  
KAWAI MUSIC SCHOOL  
PIANO COMPETITION

**Q. As for the free piece, can I choose more than 1 very different piece?**

A. NO. If you want to perform multiple pieces, they must be from the same suit or variation.

**Q. I understand that there are no repeat marks on the music sheet, but I want to repeat the piece because the piece is too short for me. Is this acceptable?**

A. NO. You must perform just as indicated in the music sheet. Do not repeat the piece without repeat marks.

**Q. I participated in a Duo category and my teacher made some mistakes in their accompaniment. Will it affect my evaluation?**

A. NO. Your teacher's accompaniment will not affect your evaluation.

However, if your teacher appears to be using a different music sheet than the one designated, your score will be deducted.

# FAQ

## <About repertoire>



The 4th  
KAWAI MUSIC SCHOOL  
PIANO COMPETITION

**Q. When performing the assigned piece, can I use a textbook other than “SOUND TREE”, if the piece name is same?**

A. NO. For the assigned piece, you are required to use designated “SOUND TREE” textbook.

Some of the pieces may be found in the textbooks other than “SOUND TREE”, but please be sure to use the designated book even in that case.

**Q. I performed the piece No. 30 of SOUND TREE 4A textbook even though I have to perform the piece No. 30 of SOUND TREE 3A. Will this affect my evaluation?**

A. YES. If you perform the different piece than your application, the judging will not be conducted.

**Q. I want my teacher to listen to my performances, in addition to the pieces for this competition. Can I perform extra pieces?**

A. NO. Please only perform the required pieces.

# FAQ

## <Other questions>

### **Q. Is there any dress code?**

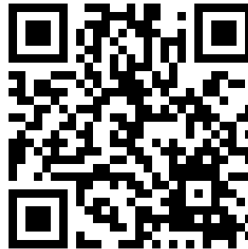
A. NO. However, it is desirable to be dressed appropriately for performing in front of an audience.

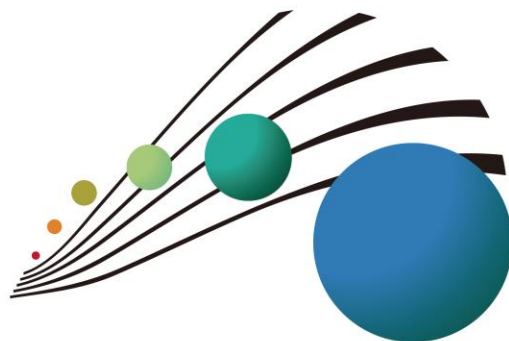
# Contact



The 4th  
KAWAI MUSIC SCHOOL  
PIANO COMPETITION

If you have any questions or inquiries, please visit our Web site (<https://musicschool.kawai-global.com/>) and click "contact" button to contact us.





The 4th  
KAWAI MUSIC SCHOOL  
PIANO COMPETITION